



UNIVERSAL INFANT CAR SEAT ADAPTER
FOR ELEMENT™ STROLLER



Model #: ZY037

A017 10/19

IMPORTANT - READ CAREFULLY AND KEEP FOR FUTURE REFERENCE

WARNING

Your child's safety depends on you. Proper product use cannot be assured unless you follow these instructions.

How to Keep Your Child Safe While Using this Stroller Infant Car Seat Adapter

- **Adult assembly required.**
- **Never leave the child unattended.** Accidents can happen quickly while your back is turned. You must always keep your child in view while your child is in the stroller, even when sleeping. Do not use this product as a bed. Your child may become tangled in straps or pads and suffocate.
- **Ensure that all locking devices are engaged before use.** This prevents injuries caused by stroller collapsing before allowing your child in or near the product.
- Parking brake shall be engaged when placing and removing the children from the product.
- Always set the wheel brakes when stroller is not moving, especially on an incline. This prevents the product from rolling away.
- Only use accessories and/or replacement parts supplied or recommended by the manufacturer.
- When using this product, to avoid serious injury from falling or sliding out, infant must always be secured in the infant car seat with the car seat harness. Refer to infant car seat instructions for proper adjustment.
- **Make sure the stroller is fully unfolded and the car seat adapter is securely latched before attaching your infant car seat.** This prevents finger pinching and injuries caused by stroller collapsing.

How to Use this Adapter with your Infant Car Seat

- To ensure your infant car seat is properly installed on the stroller, make sure it is:
 - Tightly secured to the stroller.
- Only transport infants that are within the size and weight limitations of your infant car seat, as described in the instruction manual provided by the infant car seat manufacturer.
- If at any time your infant car seat does not secure properly to the stroller, or if you have questions about assembly or use of the stroller, **DO NOT** use this product. Call Contours at 1-888-226-4469.
- For a list of compatible infant car seats, visit ContoursBaby.com

IMPORTANTE - LEA DETENIDAMENTE ESTAS INSTRUCCIONES Y GUÁRDELAS PARA CONSULTARLAS EN EL FUTURO

ADVERTENCIA

La seguridad de su hijo depende de usted. Para garantizar el uso adecuado del producto debe seguir estas instrucciones.

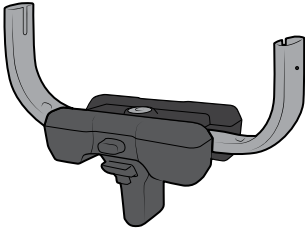
Cómo mantener seguro a su hijo mientras usa este adaptador para silla de cochecito

- **Se requiere la instalación por parte de un adulto.**
- **Nunca deje a su hijo sin vigilancia.** Pueden ocurrir accidentes repentinamente mientras usted se encuentra de espaldas. Debe mantener a su niño siempre a la vista mientras esté en la carriola, aunque esté durmiendo. No utilice este producto como cama. Su niño pudiera quedar atrapado entre las correas o sofocarse con los colchoncitos.
- **Antes de usarlo, asegúrese de que todos los dispositivos de bloqueo estén debidamente conectados,** evitará las lesiones provocadas por una caída accidental antes de acercarse o colocar a su hijo en el cochecito.
- Mientras se coloca o se saca al niño, deberá mantenerse accionado el freno de parada.
- Cuando el cochecito no esté en movimiento, accione siempre los frenos de las ruedas, especialmente si se encuentra en una superficie inclinada. De este modo, evitará que el cochecito se desplace sin control.
- Utilice únicamente accesorios y/o piezas de repuesto suministrados por el fabricante.
- Cuando utilice este producto, para evitar lesiones graves provocadas por caídas o deslizamientos, el bebé siempre debe estar sujeto a la silla infantil para el coche mediante el arnés del asiento del coche. Para obtener más información sobre el ajuste adecuado, consulte las instrucciones del asiento de seguridad.
- **Asegúrese de que el cochecito esté completamente desplegado y de que el adaptador esté bien sujeto antes de instalar la silla infantil para el coche.** De esa forma evitará las lesiones en los dedos y otras partes del cuerpo provocadas por una caída accidental del cochecito.

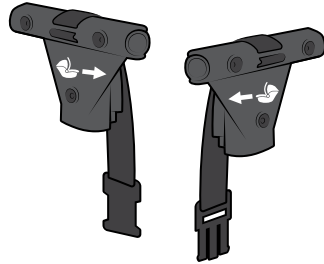
Instrucciones para el uso de este cochecito con su silla infantil para el coche

- Para comprobar que la silla infantil para el coche esté correctamente instalada en el cochecito, asegúrese de que esté:
 - Firmemente fijada al cochecito.
- Utilícelo únicamente para transportar a bebés que cumplan las limitaciones de tamaño y peso de la silla infantil para el coche que se indican en el manual de instrucciones proporcionado por su fabricante.
- Si la silla infantil para el coche no se fija correctamente al cochecito o si tiene dudas sobre la instalación o el uso del cochecito, **No** utilice este producto. Llame a Contours al 1-888-226-4469.
- Para obtener una lista de las sillas infantiles para el coche compatibles, visite ContoursBaby.com

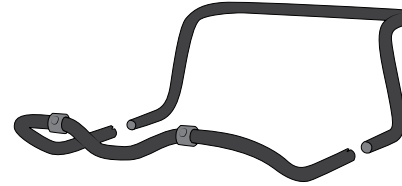
PARTS LIST



ADJUSTABLE MOUNT
Montaje ajustable



**LATCH CONNECTORS WITH STRAP
AND BUCKLE**
Conectores de enganche con correa
y hebilla



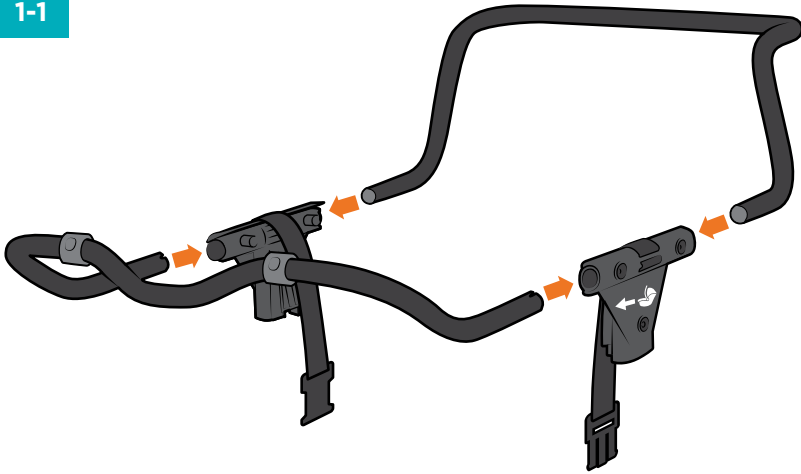
SUPPORT TUBES
Tubos de soporte



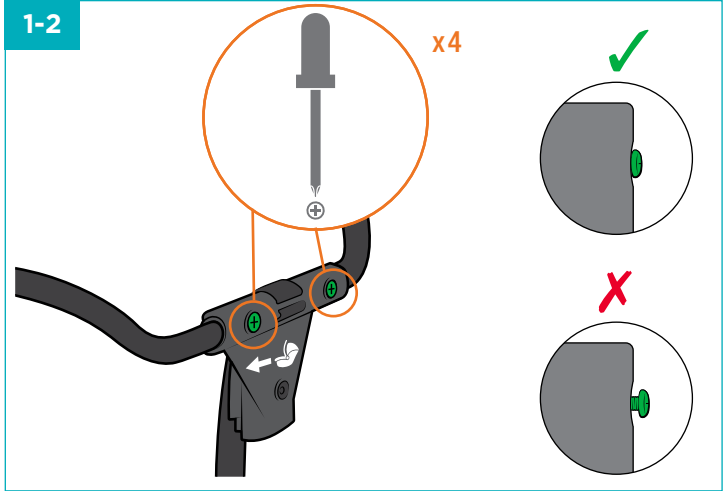
SCREWS (6)
Tornillos (6)

ASSEMBLING ADAPTER

1-1



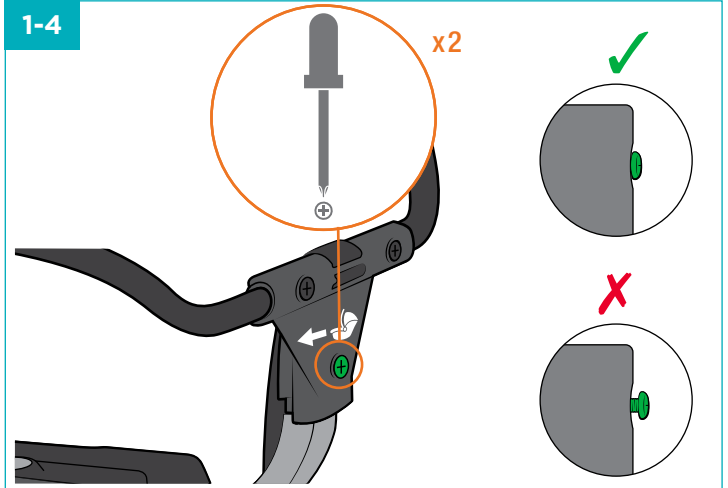
1-2



1-3

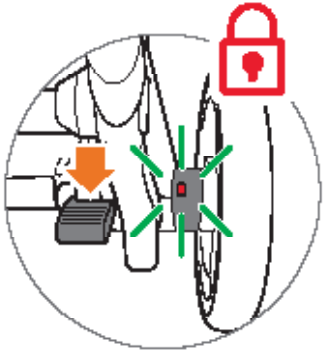


1-4

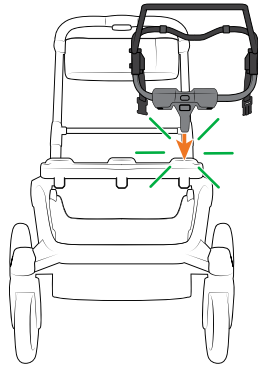


ATTACHING INFANT CAR SEAT TO STROLLER

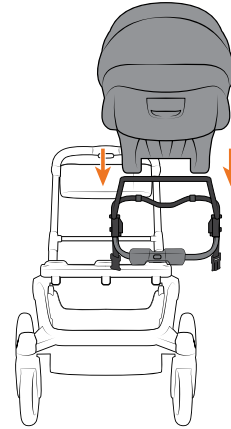
2-1



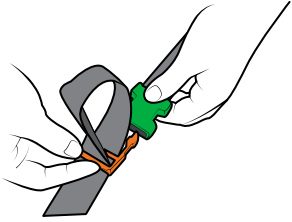
2-2



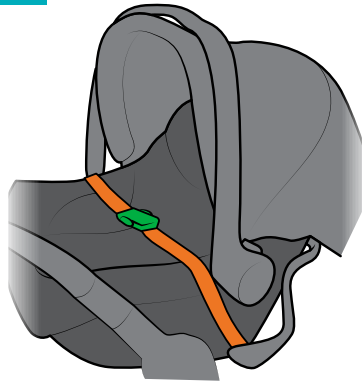
2-3



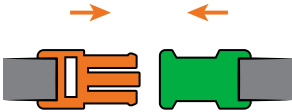
2-4



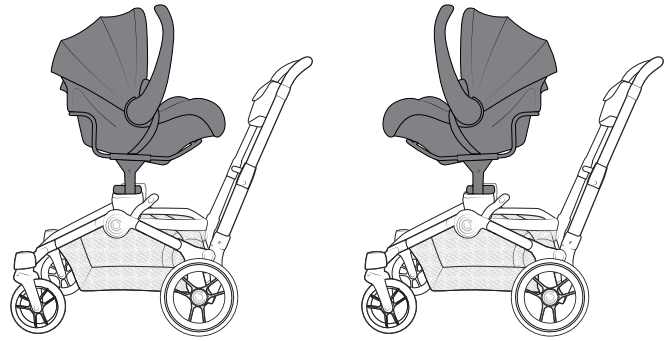
2-6



2-5

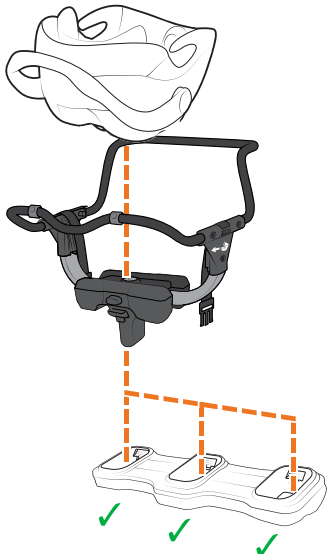


REVERSIBLE

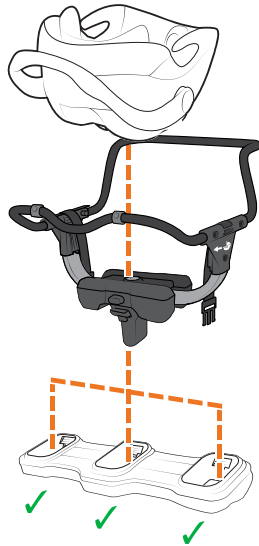


ADAPTER CONFIGURATIONS - ONE CHILD

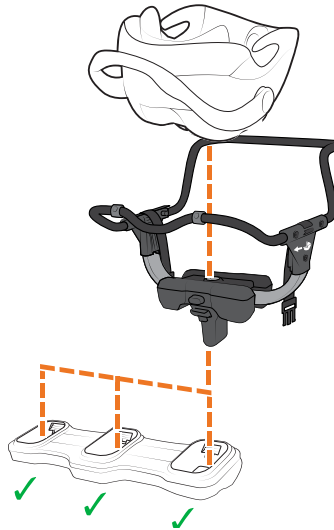
3A



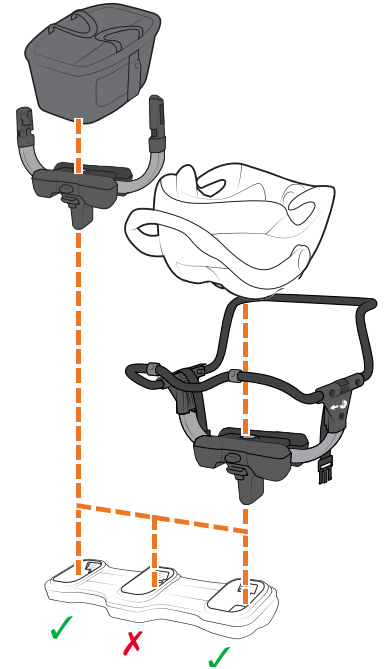
3B



3C

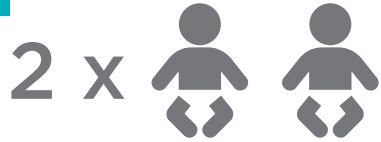


3D

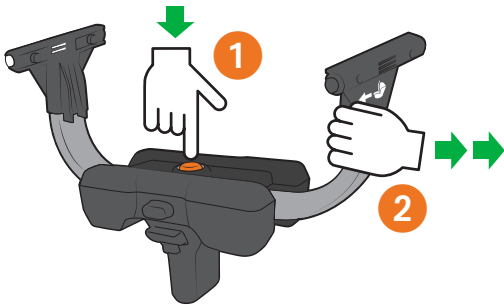


ADJUSTMENT FOR TWO CHILDREN

4-1



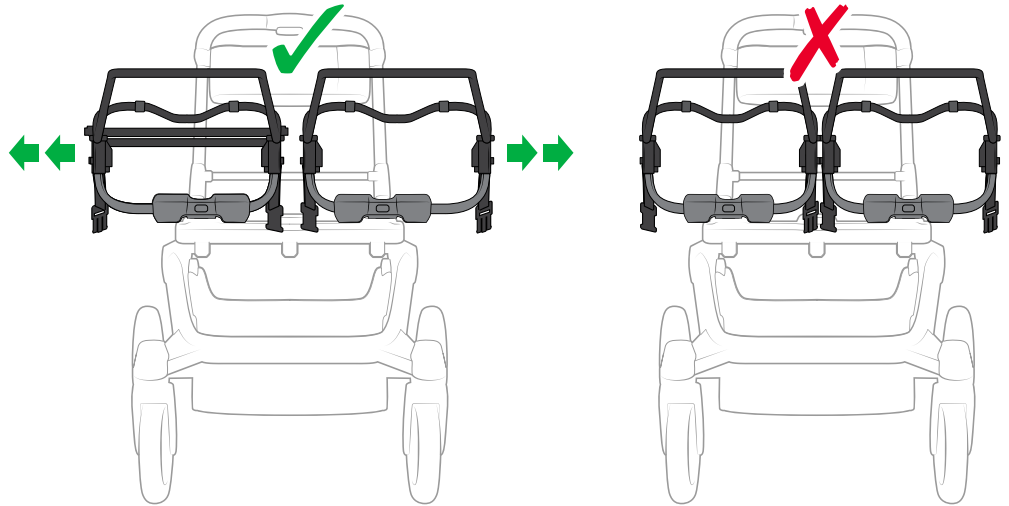
ADJUST OUTWARD
AJUSTE HACIA FUERA



1 PUSH / EMPUJAR

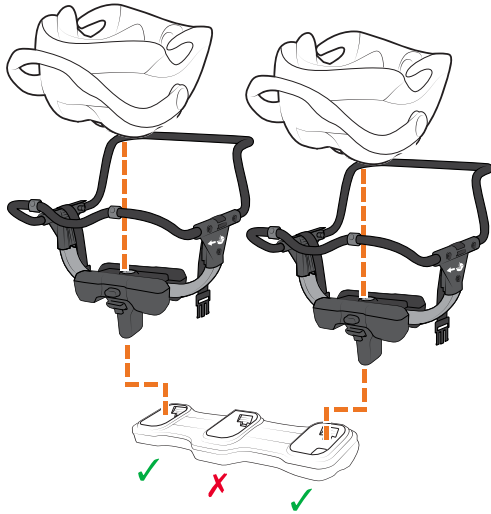
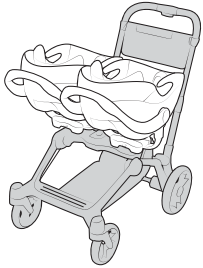
2 PULL / HALAR

4-2

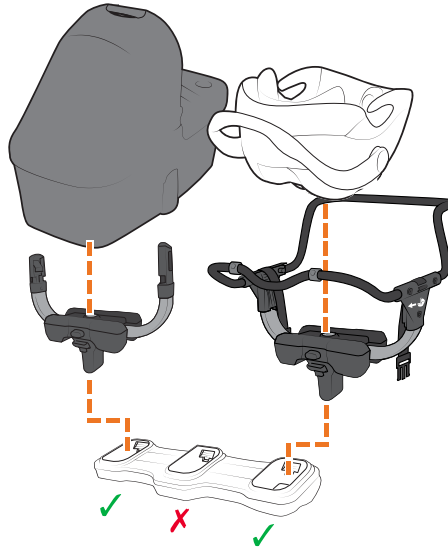


ADAPTER CONFIGURATIONS - TWO CHILDREN

5A



5B

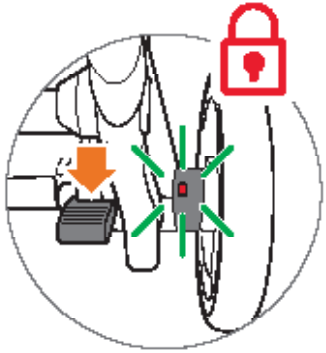


5C

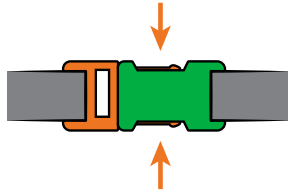


REMOVING INFANT CAR SEAT FROM STROLLER

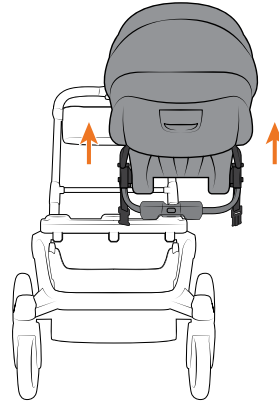
4-1



4-2

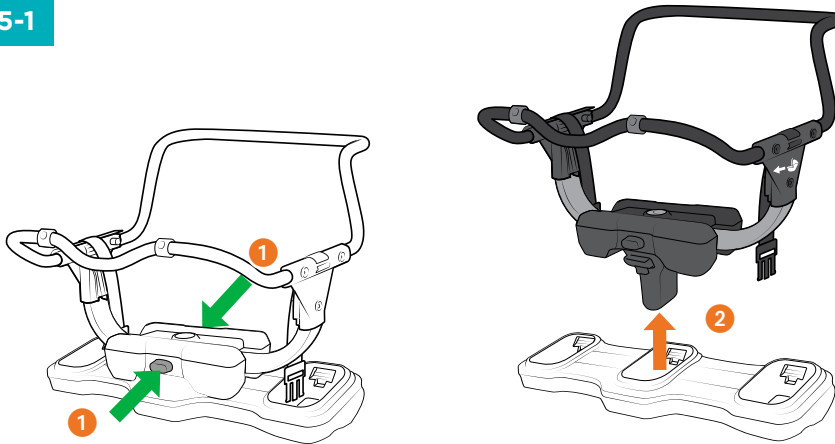


4-3



REMOVING ADAPTER FROM STROLLER

5-1



CARE & MAINTENANCE

- Clean metal parts with a damp cloth and wipe dry.
- If adapter becomes wet, wipe with a soft cloth to prevent rusting on metal frame.
- When storing stroller, never stack other items on top of or in it; this may damage the stroller.
- Periodically check for worn parts, loose screws, or torn materials and stitching.
- Replace any damaged parts immediately.

LIMITED WARRANTY

Contours® warrants this product to be free of defects in materials and workmanship, as follows: For a period of ONE YEAR from the date of purchase, Contours will repair or replace, at its option, the defective product. If you have a problem or are not satisfied with this product, please contact the Consumer Service Department at Contours.

REPAIR OR REPLACEMENT AS PROVIDED UNDER THIS WARRANTY IS THE EXCLUSIVE REMEDY OF THE CONSUMER. CONTOURS SHALL NOT BE LIABLE FOR ANY INCIDENTAL OR CONSEQUENTIAL DAMAGES FOR BREACH OF ANY EXPRESS OR IMPLIED WARRANTY ON THIS PRODUCT, EXCEPT TO THE EXTENT REQUIRED BY APPLICABLE LAW. ANY IMPLIED WARRANTY OF MERCHANTABILITY OR FITNESS FOR A PARTICULAR PURPOSE ON THIS PRODUCT IS LIMITED TO THE DURATION OF THIS WARRANTY.

Some states do not allow the exclusion or limitation of warranties set forth above, so the above exclusions may not apply to you. This warranty gives you specific legal rights, and you may also have other rights which vary from state to state. We sincerely thank you for your purchase of this Contours product.

To obtain warranty service, please call Contours Consumer Service Department at 1-888-226-4469 in U.S. and Canada, 1-312-361-6493 outside U.S. and Canada or contact us via email at customerservice@contoursbaby.com

If the product is returned to Contours Consumer Service Department for repair or replacement, it must be shipped prepaid and adequately insured.

For further information visit www.contoursbaby.com

Recall WEBSITE: HELP KEEP YOUR CHILD SAFE. Check www.recall.gov to see if any products you use with your child or any of your child's toys have been recalled.

PERSONAL RECORD CARD

Once in a while, we are less than perfect and one of our products with a problem reaches a customer. In most cases, we can solve your problem with replacement parts. Please contact us before you return one of our products to the store.

If you have a question about your product, please have the following available when you call:

- Product model number
- Date of manufacturing

You can find the Model Number and Date of Manufacture on a label located on the bottom of the adjustable mount. Having this information ready will expedite your service call.

Contours® - United States
1100 W Monroe St
Chicago, IL 60607

1-888-226-4469
customerservice@contoursbaby.com

Model / Style Number: _____

Date of Manufacture: _____

Date of Purchase: _____